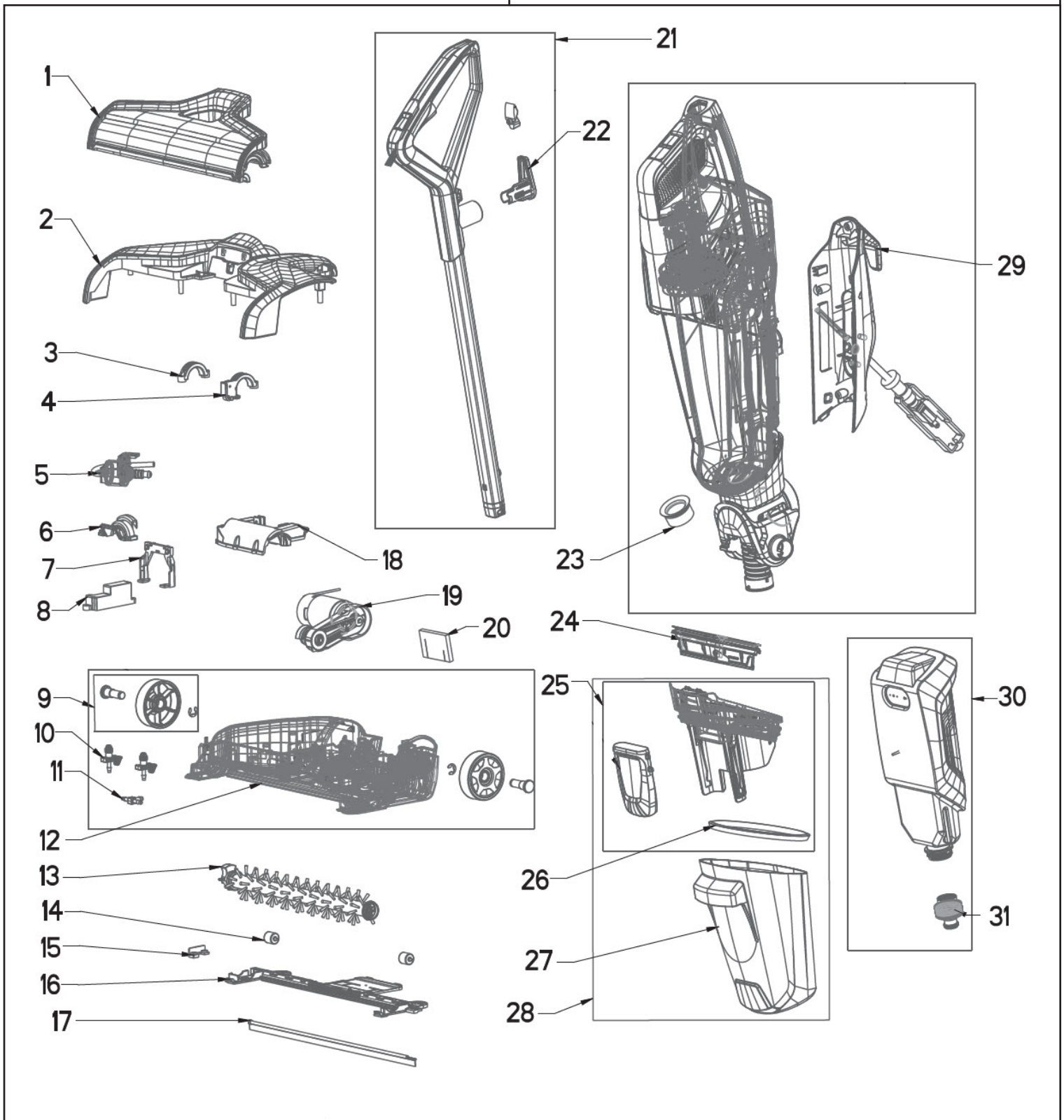




CrossWave Commercial

3388



Issued: January 2022

Revised:

© 2022 BISSELL Homecare, Inc.

CrossWave Commercial

3388



KEY	PART #	DESCRIPTION
1	1630559	Cover - Brush Nozzle, RD002, SWET, P2985, REPL
2	1630560	Cover - Foot, Top, IEC, BK003, SWET, P2985, REPL
3	1627157	Bracket, Pivot Left
4	1627158	Bracket, Pivot Right
5	1630561	Pump - 230V, IEC, SWET, P2985, REPL
6	1627160	Bracket, Hose
7	1627161	Bracket, LED
8	1630562	PCBA - Foot, IEC, SWET, P2985, REPL
9	1627164	Wheel and Axle Assembly, Rear
10	1630564	Connector- Spray, IEC, SWET, P2985, REPL
11	1627166	T Connector
12	1630563	Housing - Foot, Lower, IEC, BK003, SWET, P2985, REPL
13	1630565	Brush Roll - Multi Surface, IEC, SWET, P2985, REPL
14	1627168	Wheel and Axle Assembly, Front
15	1627169	Cover, Squeegee
16	1627170	Cover, Bottom
17	1627171	Squeegee
18	1627172	Cover, Brush Motor
19	1630568	Assy - Motor, Brush, 230V, SWET, P2985, REPL
20	1630569	Filter - EMC, SWET, P2985, REPL
21	1630566	Assy - Handle, IEC, RD002, GY007, SWET, P2985, REPL
22	1630567	Wrap - Cord, RD002, SWET, P2985, REPL
23	1627178	Gasket, Inlet
24	1630582	Filter - Pleated w/ Mesh, IEC, SWET, P2985, REPL
25	1627179	Cover, Dirty Tank, Assembly
26	1612070	Seal, Dirty Tank, Crosswave
27	1627180	Tank, Dirty
28	1627181	Dirty Tank Assembly
29	1630580	Cover - Back Plate, IEC, BK003, SWET, P2985, REPL
30	1630570	Tank - Clean, IEC, SWET, P2985, REPL
31	1608691	Clean Tank Valve with Cap, CrossWave
xx	1630571	Power Cord - UK Plug, SWET, P2985, REPL
xx	1630572	Switch - Power, SWET, P2985, REPL
xx	1630573	Cover - Carry Handle, IEC, GY007, SWET, P2985, REPL
xx	1630574	Motor - Suction, 230V, SWET, P2985, REPL
xx	1630575	PCBA - Self Clean, IEC, SWET, P2985, REPL
xx	1630576	PCBA - Mainboard, IEC, SWET, P2985, REPL
xx	1630577	Receiver - Clean Tank, SWET, P2985, REPL
xx	1630578	Connector - Handle, Male End, IEC, SWET, P2985, REPL
xx	1630579	Switch - Detent Microswitch, SWET, P2985, REPL
xx	1630581	Hose - Foot, SWET, P2985, REPL

Issued: January 2022

©2022 BISSELL Homecare, Inc.