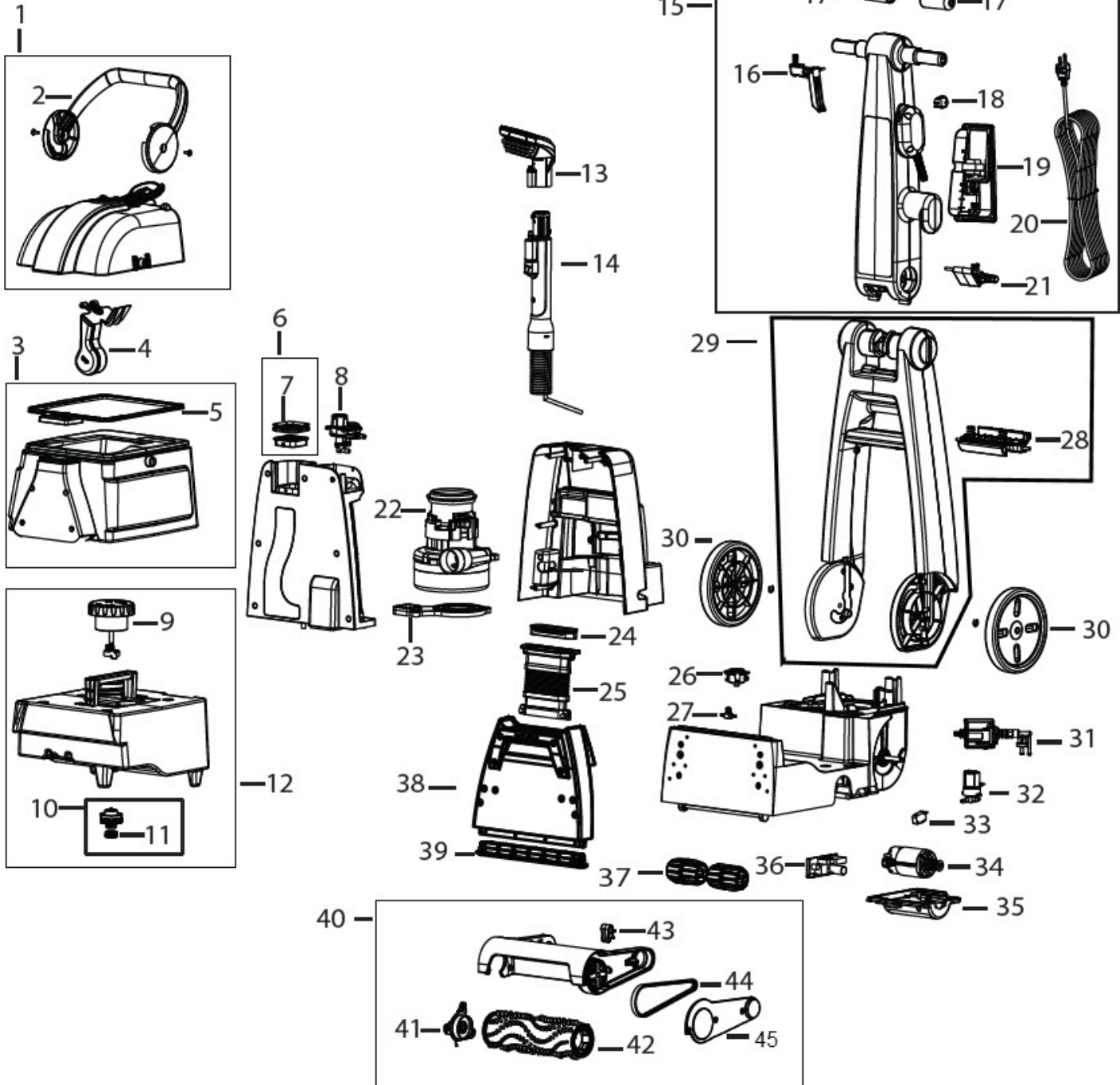




DC 100

64P81



Issued: January 2022

Revised: March 2022

© 2022 BISSELL Homecare, Inc.



KEY	PART #	DESCRIPTION	KEY	PART #	DESCRIPTION
1	1631109	Dirty Tank Lid, Red	28	1631110	Lower Handle Detent, Red
2	2037450	Water Seperator Handle, Black	29	1631108	Lower Handle Assembly
3	1631104	Dirty Tank, Red front	30	2037447	Wheel Assembly
4	2037451	Float	31	2037696	Pump
5	2037453	Dirty Tank Gasket	32	2037699	Solenoid Valve
6	2037463	Upper Housing Filter Assembly	33	2036759	Microswitch - Brush engagement
7	2037468	Vaccum Motor Duct Gasket	34	2037694	Brush Motor Assembly
8	1606811	Flow Indicator Assembly	35	2037466	Brush Motor Cover
9	2037455	Clean Tank Cap Assembly	36	2037697	PCBA - Brush Motor
10	2036675	Cap and Insert Assembly, Clean Water Tank	37	2037459	Base roller
11	2036679	Autoload Gasket	38	1631106	Nozzle/Fluid Path Cover with Carry handle, Red
12	2037454	Clean Tank Assembly	39	2037530	Floor Nozzle
13	2037444	15cm Tool	40	2037462	Brush Carriage Assembly
14	2037443	Hose Assembly	41	2037459	Brush Endcap
15	1631107	Upper Handle Assembly	42	2037458	Brush Roll
16	2037464	Spray Trigger	43	2037470	Brush Carriage Clip
17	2037448	Grip Cover	44	2037460	Brush Belt
18	2037698	Power Switch	45	2037461	Brush Carriage Belt Cover Plate
19	2037703	Hour Meter			
20	1631103	Power Cord, 10M UK plug	xx	2037442	Hose Storage Bag
21	1631105	Upper Handle Detent, Red			
22	2037695	Vacuum Motor			
23	2037465	Motor Mount			
24	2037456	Nozzle Gasket			
25	2037457	Nozzle Assembly			
26	2037429	Receiver Screen			
27	2037430	Spray Tip			

Issued: January 2022
Revised:
© 2022 BISSELL Homecare Inc.